

World's Largest  
Independent Source of  
**GENUINE**  
HYDRAULIC Parts & Units

SALES | REPAIR | RETROFIT | REMANUFACTURING | TRAINING



**ETS**  **ENGINEERING  
TECHNOLOGY  
SERVICES**





## SALES & CUSTOMER SUPPORT



### TECHNICAL CUSTOMER SERVICE

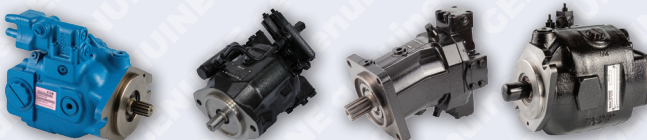
The ETS sales and customer service staff is ready with instant solutions to your needs on the first call. Price and availability are immediately accessible through an advanced real-time computerized inventory system, with most orders fulfilled within 24 hours or same day with overnight shipping worldwide.



## GENUINE Hydraulic Spare Parts & Units



### PUMPS & MOTORS



### VALVES



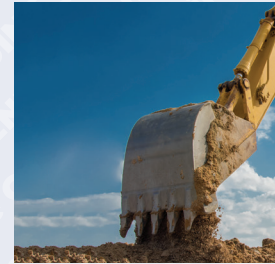
### ACCUMULATORS, FILTERS & more



## 24/7 ONLINE STORE SHOP.ETSHYDRO.COM







## QUALITY REPAIR & TEST

### HYDRAULIC EXPERTISE

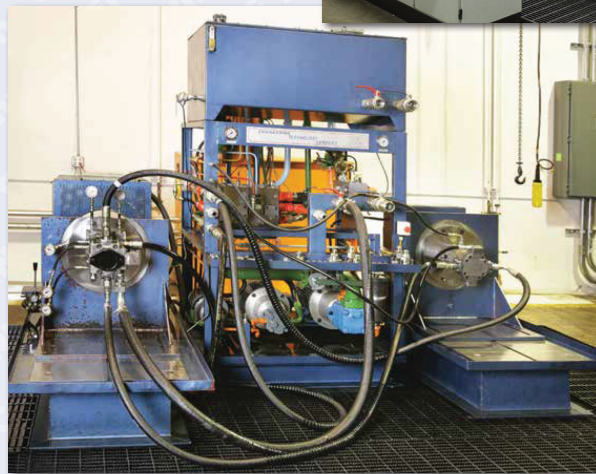
With over 275 years of combined experience and \$35M in genuine inventory for best in class manufacturers like Bosch Rexroth, Parker, Eaton and Hydac, ETS meets critical service and spare parts needs for mobile and industrial hydraulic system MRO's and their customers worldwide.

### CERTIFIED TECHNICAL TRAINING

As members of the NFPA, ETS is committed to offering quality hydraulic training to educate our customers, students, or anyone interested in the fluid power industry. Training is offered at the ETS repair/training facility in Memphis, TN.



## QUALITY REPAIR & TEST



### LATEST VALVE TEST STAND TECHNOLOGY

With over 25 years of experience repairing best in class brand Valves, customers will have complete confidence that ETS will meet their valve servicing requirements including remanufacturing and test services.

ETS is committed to providing our customers with the most reliable remanufactured pumps and motors possible.

- Two test stands that have boosted and filtered suctions from 0-265 GPM for open and closed loop units.
- Manifolds using Logic Technology are capable of 6500 PSI for closed loop pumps.
- Dynamic testing for motors.
- All computerized testing to ensure true efficiencies.
- Test reports available upon requests.

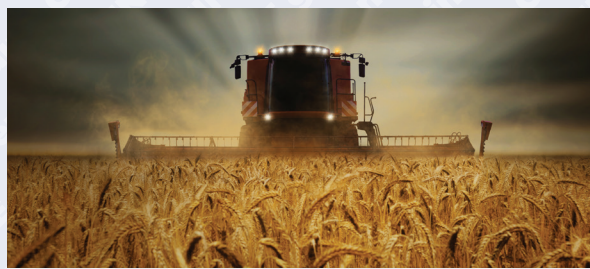
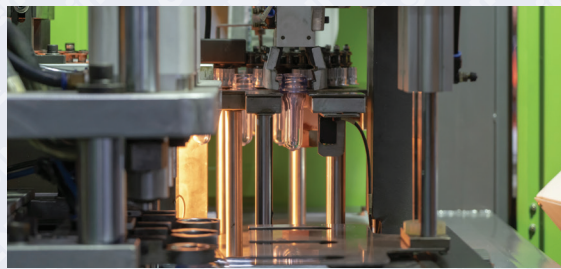


## CLEAN ROOM



ETS offers ISO 9001:2015 state-of-the-art repair and testing facilities for hydraulic piston pumps, motors and valves.





## EXPANDED HYDRAULIC SERVICES

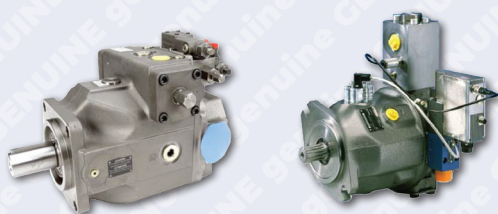
*Serving the time-critical, hydraulic parts and repair needs of hydraulic repair shops and MRO Industrial & Mobile customers.*

### FAST TURNAROUND SERVICE

ETS offers **standard 1-3 days** repairs and returns on all pump, motors, and valves. For "urgent" breakdown situations we also offer **24-hour URGENT service** turnaround repair and/or **service replacement**.

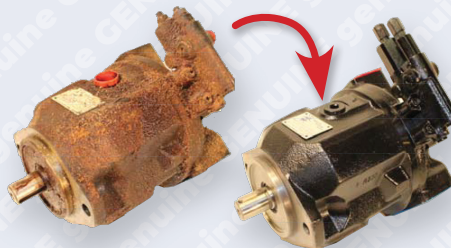
#### UPGRADES

*To improve performance of older machines*



#### REMANUFACTURING SERVICES

*ETS offers full remanufacturing services for your hydraulic motors and piston pumps*



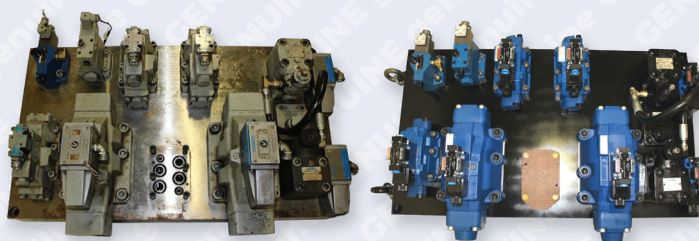
*"We bring your scrap back to life!"*

#### RETRO-FITS

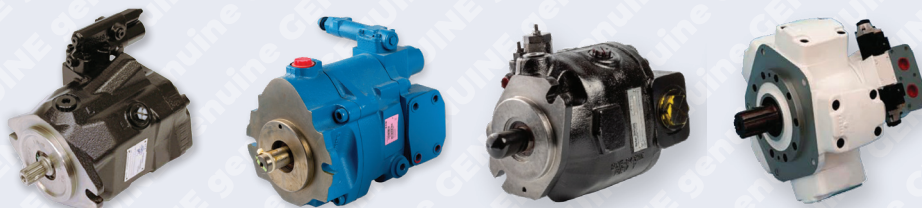
*For obsolete products*



#### FULL SERVICE OPTIONS FOR MANIFOLDS



#### SERVICE REPLACEMENT UNITS





# EXPERIENCE

*the*

# ETS

*Difference!*

**GENUINE**  
Hydraulic  
Spare Parts & Units



\$35 Million **GENUINE**  
Parts and Units in stock for  
global overnight shipment.

## What's all the fuss about **GENUINE**?

ETS enables customers to guarantee uptime on their machine with ONLY **GENUINE** "original manufacturer" parts and units for optimal performance and lifespan!

### **GENUINE** or Grey Market? Don't Install Doubt!

In a world charged with budgets demanding better price and faster delivery, the door gets shoved wide open for "Grey Market", will-fit copies of original manufacturers' Parts and units.

“

*The Hydraulics Industry  
has been assaulted by  
grey market products for over  
twenty years from practically every corner  
of the world. The result for users has been  
mass confusion,  
inferior performance and in many cases –  
catastrophic failures  
costing thousands of dollars to remedy.*

”

### So why is **GENUINE** important?

#### 1. LATEST DESIGN

Only **GENUINE** parts ensure the latest designs for the product.

#### 2. ORIGINAL PRODUCT SPECIFICATION INTEGRITY

Only **GENUINE** parts guarantee the material quality is original specification from the manufacturer. Inferior alloys, heat treat, seals and bearings compromise the performance specifications of the original product.

#### 3. TOLERANCE RANGES MATTER

Grey Market/Aftermarket parts are designed from samples of genuine product. All manufacturers maintain plus/minus tolerances for the individual unit parts. A sample or samples, in no way, reflect the exact specification from the **GENUINE** parts drawing. Therefore, the plus/minus tolerances can be too high or too low, presenting significant stack-tolerance issues, as Grey Market repair parts are used in combination with **GENUINE** parts.

**GENUINE** parts and units matter.





EXPERIENCE  
*the* **ETS**  
*Difference!*



P 901.369.5404 | F 901.362.8901  
 3861 Delp Street, Memphis, TN 38118

P +32 (0) 14 62 28 60 | F +32 (0) 14 62 28 69  
 Rouwbergskens 5, 2340 Beerse, Belgium