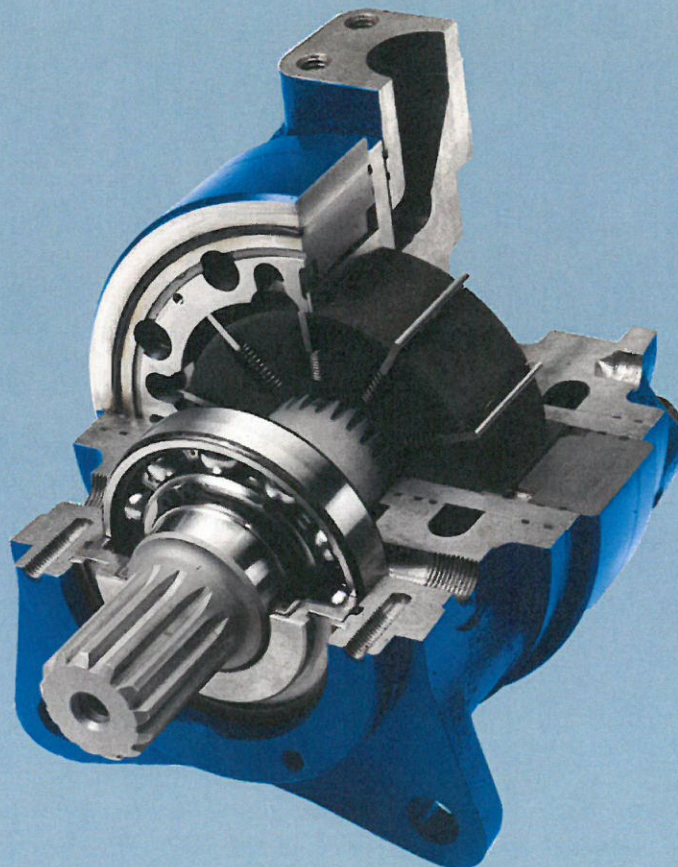


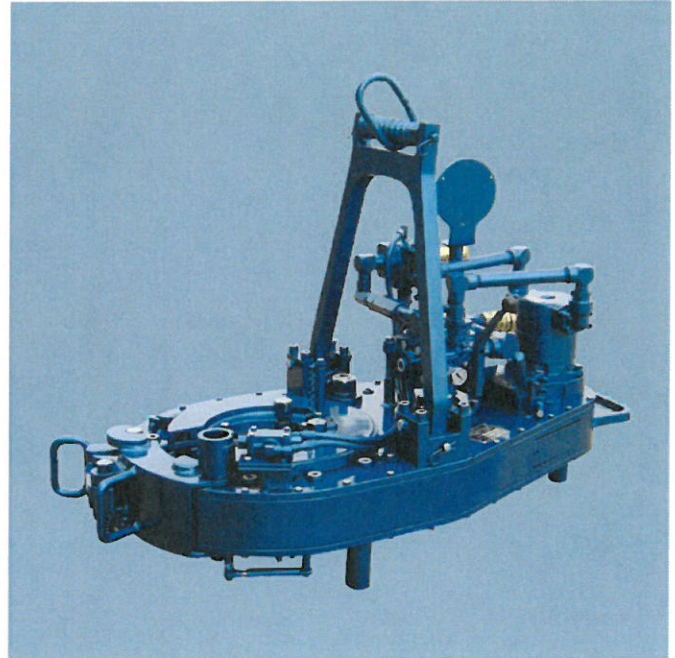
The first choice for the toughest jobs

- ▶ Augers
- ▶ Blast Hole Rigs
- ▶ Bow Thrusters
- ▶ Conveyors
- ▶ Coring/Drilling
- ▶ Directional Drills
- ▶ Fan Drives
- ▶ Feeder Mixers
- ▶ Injection Molding
- ▶ Planer Tables
- ▶ Power Tongs
- ▶ Pump Drives
- ▶ Roof Bolters
- ▶ Rotary Table Drives
- ▶ Shredders
- ▶ Timber Harvesting
- ▶ Top Head Drives
- ▶ Wheel & Tracks
- ▶ Winches



Driven to design better solutions to meet your unique needs

Working together, we constantly strive to deliver more power where you need it, when you need it, to get the job done!



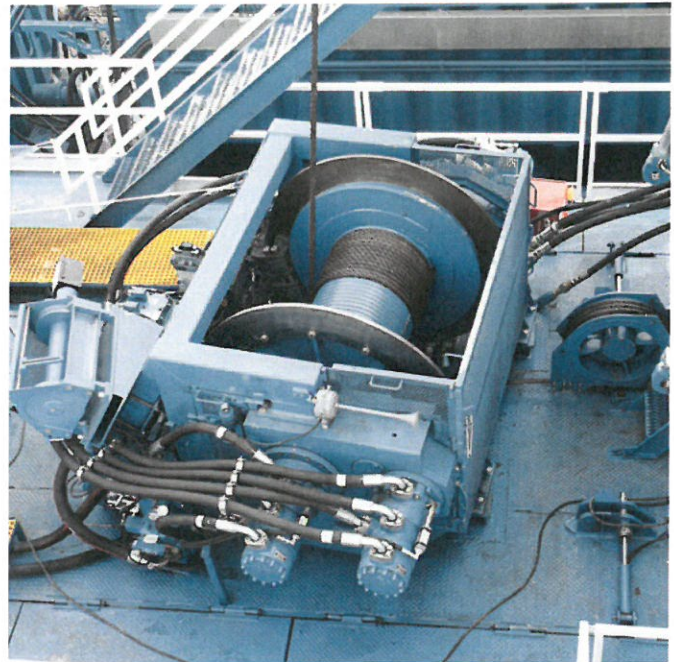
◀ Caisson drill rigs use 4-ported motors along with a multi-speed circuit to vary bit rpm and torque.

▲ Power tongs are a staple of the oil field. Our vane crossing vane motors have been providing the torque to make and break pipe joints for over 40 years.

Designed & manufactured to withstand the most demanding applications



◀ Vane crossing vane motors power top drives for oil and gas exploration.



▲ A large capacity winch is driven by two 4096 cc (250 cubic inch) motors plugged into the drum via a gearbox.

Engineering the right motors for over 40 years

Rineer Hydraulics, Inc. was formed in 1967, and is recognized worldwide as a leading manufacturer of quality hydraulic motors. Rineer has been integrated with Bosch Rexroth since 2008 and is a strong complement to our hydraulic portfolio.

Highly skilled engineers

Our team of dedicated engineers, working with a state-of-the-art CAD system, responds quickly to customer requests.

Extensive R&D testing

Once a design modification is completed, drawings are forwarded to manufacturing for machining. Upon completion, units are sent to the R&D Lab for extensive mechanical and hydraulic testing.

State-of-the-art equipment

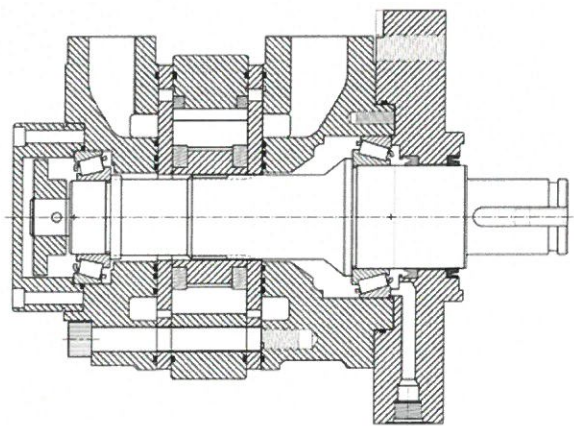
The lab is equipped with computer monitored dynamometers with capabilities exceeding 1,000 horsepower. Coupled with numerous special devices, we can perform a wide array of testing.

Quality assurance

To ensure maximum control over tolerances and quality, all major components of the vane crossing vane motor are manufactured in-house using the latest technology.

Customer satisfaction is our priority

Our company mission is to provide our customers with a reliable, performance-proven product. Customers are welcome to share ideas with our staff in order to assure complete satisfaction.



- ▲ Customized motor with customer specified shaft and mount
- ▲ Load specific bearing selection
- ▲ Speed sense capability